



## OPEN ACCESS

## EDITED BY

Yujing Li,  
Emory University, United States

## REVIEWED BY

Rezvan Noroozi,  
Jagiellonian University, Poland  
Amin Safa,  
Complutense University of Madrid,  
Spain

## \*CORRESPONDENCE

Soudeh Ghafouri-Fard,  
s.ghafourifard@sbmu.ac.ir  
Arezou Sayad,  
ar.sayad@yahoo.com

## SPECIALTY SECTION

This article was submitted to RNA,  
a section of the journal  
Frontiers in Genetics

RECEIVED 12 June 2022

ACCEPTED 29 July 2022

PUBLISHED 26 August 2022

## CITATION

Dadyar M, Hussen BM, Eslami S,  
Taheri M, Emadi F, Ghafouri-Fard S and  
Sayad A (2022), Expression of T cell-  
related lncRNAs in multiple sclerosis.  
*Front. Genet.* 13:967157.  
doi: 10.3389/fgene.2022.967157

## COPYRIGHT

© 2022 Dadyar, Hussen, Eslami, Taheri,  
Emadi, Ghafouri-Fard and Sayad. This is  
an open-access article distributed  
under the terms of the [Creative  
Commons Attribution License \(CC BY\)](https://creativecommons.org/licenses/by/4.0/).  
The use, distribution or reproduction in  
other forums is permitted, provided the  
original author(s) and the copyright  
owner(s) are credited and that the  
original publication in this journal is  
cited, in accordance with accepted  
academic practice. No use, distribution  
or reproduction is permitted which does  
not comply with these terms.

# Expression of T cell-related lncRNAs in multiple sclerosis

Maryam Dadyar<sup>1</sup>, Bashdar Mahmud Hussen<sup>2,3</sup>, Solat Eslami<sup>4,5</sup>,  
Mohammad Taheri<sup>6</sup>, Farhad Emadi<sup>7</sup>, Soudeh Ghafouri-Fard<sup>1\*</sup>  
and Arezou Sayad<sup>1\*</sup>

<sup>1</sup>Department of Medical Genetics, School of Medicine, Shahid Beheshti University of Medical Sciences, Tehran, Iran, <sup>2</sup>Department of Pharmacognosy, College of Pharmacy, Hawler Medical University, Kurdistan Region, Erbil, Iraq, <sup>3</sup>Center of Research and Strategic Studies, Lebanese French University, Kurdistan Region, Erbil, Iraq, <sup>4</sup>Department of Medical Biotechnology, School of Medicine, Alborz University of Medical Sciences, Karaj, Iran, <sup>5</sup>Dietary Supplements and Probiotic Research Center, Alborz University of Medical Sciences, Karaj, Iran, <sup>6</sup>Institute of Human Genetics, Jena University Hospital, Jena, Germany, <sup>7</sup>Skull Base Research Center, Shahid Beheshti University of Medical Sciences, Tehran, Iran

Long non-coding RNAs (lncRNAs) have been demonstrated to in the pathophysiology of multiple sclerosis (MS). In order to appraise the role of T cell-related lncRNAs in this disorder, we assessed expressions of NEST, RMRP, TH2-LCR, MAFTRR and FLICR in MS patients and healthy individuals. We detected significant difference in the expression of RMRP and FLICR between cases and controls. There were substantial correlations between expressions of NEST, RMRP, TH2-LCR, MAFTRR and FLICR lncRNAs among patients, but not controls. The strongest correlations were found between RMRP and TH2-LCR, and between MAFTRR and RMRP with correlation coefficients of 0.69 and 0.59, respectively. ROC curve analysis revealed appropriate power of FLICR in differentiating between MS patients and healthy controls (AUC value = 0.84). Expression of NEST lncRNA was positively correlated with disease duration in MS patients, but negatively correlated with age at onset. In brief, we reported dysregulation of two T cell-related lncRNAs in MS patients and proposed FLICR as a putative marker for this disorder.

## KEYWORDS

FLICR, NEST, RMRP, TH2-LCR, lncRNA, multiple sclerosis, T cell

## Introduction

Multiple sclerosis (MS) is an autoimmune condition in which the underlying cause is not completely understood. Autoimmune reactions may occur as a result of inappropriate function of regulatory T cells (Tregs). This population of T cells expresses Foxp3 and low level of CD127 (Seddiki et al., 2006). Several genes associated with MS such as CD25, CTLA4, CD127, IL-10 have been shown to be related to Treg function or differentiation (ANZgene, 2009; Rioux et al., 2009). Numerous studies have reported abnormal function or quantities of Tregs in blood (Viglietta et al., 2004; Venken et al., 2008; Dalla Libera et al., 2011; Rodi et al., 2016), central nervous system (CNS) lesions and cerebrospinal fluid (Fritzsche et al., 2011) of MS patients. Notably, expression levels of Foxp3 have been

TABLE 1 General parameters of study participants.

Study groups	Parameters	Values	
Patients	Sex (number)	Male	12
		Female	38
	Age (Years, mean $\pm$ SD)	Male	41.08 $\pm$ 9.5
		Female	39.13 $\pm$ 8.99
	Disease duration (Years, mean $\pm$ SD)	Male	3.75 $\pm$ 2.3
		Female	10.34 $\pm$ 6.34
	Age of onset (Years, mean $\pm$ SD)	Male	37.33 $\pm$ 10.49
Female		28.76 $\pm$ 8.84	
EDSS Score	Male	2.62 $\pm$ 0.77	
	Female	2.3 $\pm$ 1.24	
Controls	Sex (number)	Male	12
		Female	38

revealed to be diminished in Tregs of MS patients (Venken et al., 2008; Frisullo et al., 2009). Moreover, their ability in inhibition of T cell response to myelin basic protein has been diminished (Haas et al., 2005; Venken et al., 2007). A recent study has reported decline in the number of resting and increase in activated CD4<sup>+</sup>CD25<sup>+</sup>FOXP3<sup>+</sup>Tregs in MS patients (Verma et al., 2021). Cumulatively, abnormal function of Tregs is a predominant finding in MS patients.

Recent studies have indicated the importance of non-coding RNAs in the regulation of Treg function and their plasticity as well as commitment of Treg lineage (Ghafouri-Fard and Taheri, 2020; Luo and Wang, 2020; Jalaie et al., 2021; Taheri et al., 2021). A number of newly identified long non-coding RNAs (lncRNAs), namely FLICR (FOXP3 Regulating Long Intergenic Non-Coding RNA), MAFTRR (MAF Transcriptional Regulator RNA), NEST (IFNG-AS1), RMRP (RNA Component Of Mitochondrial RNA Processing Endoribonuclease) and TH2-LCR (Th2 Cytokine Locus Control Region) are supposed to affect function of Tregs. However, experimental data for confirmation of their effect in the pathogenesis of MS is missing. We conducted this study to evaluate expression of these lncRNAs in the peripheral blood of MS patients in comparison with healthy persons.

## Materials and methods

### Study participants

The study included 12 male MS patients and 38 female MS patients. Additionally, 50 age and sex matched healthy individuals were recruited as controls. The latter group of individuals had no history of neuropsychiatric or immune-mediated diseases. MS patients were diagnosed based on the revised McDonald criteria (Polman et al., 2011). Relapsing-remitting MS was diagnosed based

on the presence of at least two separate areas of damage in the CNS that have happened at dissimilar points in time. MRI results, history of symptoms and findings on the neurological examination were used for diagnosis. Informed consent was obtained from all MS patients and healthy controls. The study protocol was approved by the ethical committee of Shahid Beheshti University of Medical Sciences (IR.SBMU.MSP.REC.1400.562). General data of MS patients and controls is summarized in Table 1.

### Expression studies

Four milliliters of whole peripheral blood were gathered from cases and controls. Blood specimens were used for RNA extraction using the Hybrid-RTM blood RNA extraction kit (GeneAll Biotechnology Co Ltd., South Koera). Then, cDNA was produced using the extracted RNA and a commercial Reverse Transcription kit (Applied Biosystems). Expressions of NEST, RMRP, TH2-LCR, MAFTRR and FLICR were quantified using the primers listed in Table 2. B2M was used as the reference gene for qPCR.

### Statistical analysis

GraphPad Prism version 9.0 (La Jolla, CA, United States) was used for data assessment. Expression levels of five lncRNAs, namely NEST, RMRP, TH2-LCR, MAFTRR, and FLICR were compared between MS patients and healthy controls using the comparative-delta Ct method. The normal/gaussian distribution of the values was assessed using the Shapiro-Wilk test. Mann-Whitney U test was applied to recognize differentially expressed genes between MS patients and controls. Two-way ANOVA test was applied to examine the effects of disease and gender on expressions of lncRNAs.

TABLE 2 Primer sequences.

Gene	Sequence 5→3	Primer length (bp)
<i>B2M</i>	F- AGATGAGTATGCCTGCCGTG	20
	R- GCGGCATCTTCAAACCTCCA	20
<i>FLICR</i>	F- GGG CTT TTC CAG AAG GGT CT	20
	R- AGC CCA GGG TTC TAG TCG	18
<i>MAFTRR</i>	F- CTG AAG GGA CAG GAC GGA CAA C	22
	R- GGG GAA AAC CTG GAA AGA GGG A	22
<i>NEST</i>	F- AGC TGA TGA TGG TGG CAA TCT	21
	R- TGA CTT CTC CTC CAG CGT TTT	21
<i>RMRP</i>	F- GTA GAC ATT CCC CGC TTC CCA	21
	R- GAG AAT GAG CCC CGT GTG GTT	21
<i>TH2-LCR</i>	F- GCT CCC CAG GCT TTT GAG ATA	21
	R- TGG TGA TGC TGA AGG GAG AC	20

TABLE 3 Information about selected lncRNAs.

Name/Gene ID	Accession number	Location	Official full name
IFNG-AS1 (NEST)	NR_104124.1	12q15	IFNG antisense RNA 1
	NR_104125.1		
RMRP	NR_003051.3	9p13.3	RNA component of mitochondrial RNA processing endoribonuclease
TH2LCRR (TH2-LCR)	NR_132124.1	5q31.1	T helper type 2 locus control region associated RNA
	NR_132125.1		
	NR_132126.1		
MAFTRR	NR_104663.1	16q23.2	MAF transcriptional regulator RNA
FLICR	NR_147988.1	Xp11.23	FOXP3 regulating long intergenic non-coding RNA

Correlations between expression levels NEST, RMRP, TH2-LCR, MAFTRR and FLICR were measured using Spearman's rank correlation coefficient since expression data was not normally distributed. Correlations between expressions of lncRNAs and demographic/clinical data such as age, disease duration, age at onset and EDSS were assessed using Spearman's rank correlation coefficients.

Receiver operating characteristic (ROC) curve was illustrated to value the diagnostic power of expression levels of differentially expressed genes.  $p$  value < 0.05 was considered as significant.

## Results

### Expression data

In the current study, we assessed expression of five lncRNAs, namely NEST, RMRP, TH2-LCR, MAFTRR and FLICR. Table 3 shows the information about selected lncRNAs.

Expression levels of RMRP and FLICR were different between MS patients and controls (Figure 1).

We detected significant effect of group (disease) factor on expression levels of RMRP and FLICR. However, gender factor had no significant effect on expressions of these lncRNAs, which means that there is no significant difference in the expression of these lncRNAs between males and females. Moreover, the interaction of gender and group had no effect on expressions of any of the studied genes (Table 4). Therefore, we did not perform post hoc tests for multiple comparisons.

Expression levels of RMRP and FLICR were significantly elevated in MS patients compared with controls (Figure 2).

Our data revealed significant correlations between expression levels of NEST, RMRP, TH2-LCR, MAFTRR and FLICR lncRNAs among patients, but not controls. The strongest correlations were found between RMRP and TH2-LCR, and between MAFTRR and RMRP with correlation coefficients of 0.69 and 0.59, respectively (Tables 5, 6).

ROC curve analysis revealed appropriate power of FLICR in differentiating between MS patients and healthy controls (AUC

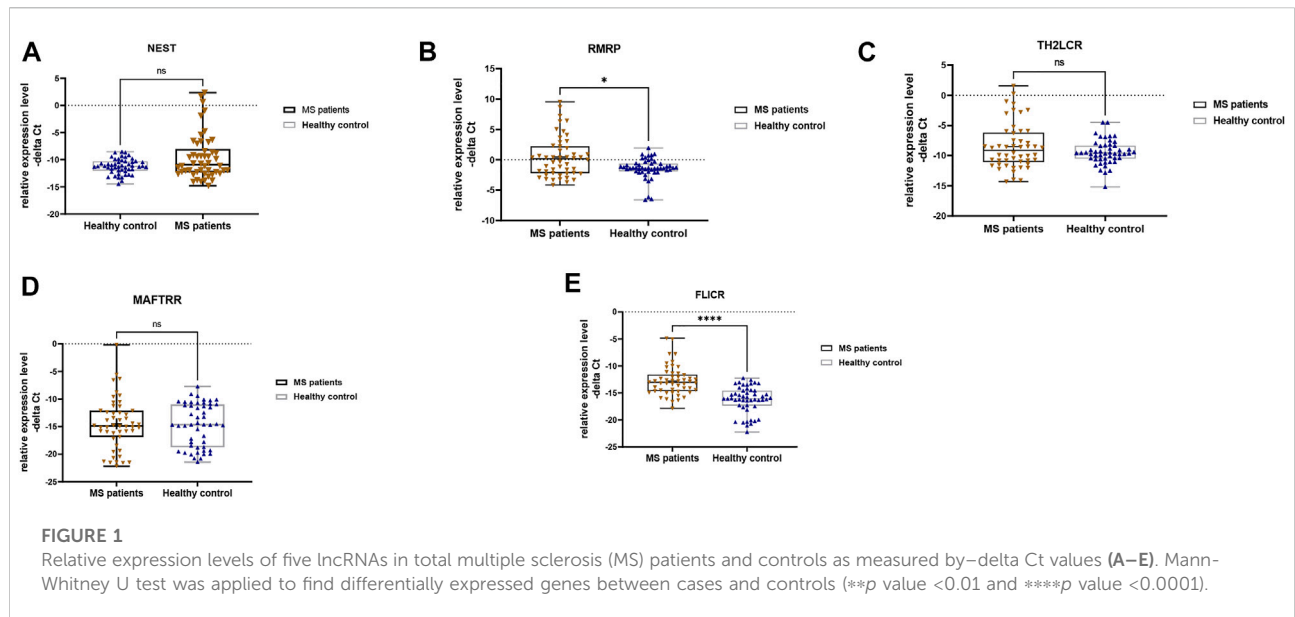


TABLE 4 Graphpad prism output from analysis of effect of Group and Gender (Tests of Between-Subjects Effects) on expression of studied genes in cases compared to healthy controls.

Source of variation	Group effect			Gender effect			Interactions		
	SS <sup>a</sup>	F <sup>b</sup>	<i>p</i> Value	SS	F	<i>p</i> Value	SS	F	<i>p</i> Value
NEST	31.28	3.03	0.072	22.9	2.42	0.12	7.18	0.75	0.38
RMRP	58.05	8.21	0.005*	3.74	0.53	0.46	0.48	0.068	0.79
TH2-LCR	34.13	3.67	0.058	0.22	0.023	0.87	9.85	1.059	0.3
MAFTRR	0.13	0.007	0.93	3.33	0.17	0.67	0.61	0.03	0.85
FLICR	233.1	34.11	<0.0001*	6.92	1.01	0.31	0.50	0.07	0.78

<sup>a</sup>Sum of Squares.

<sup>b</sup>F of Variance.

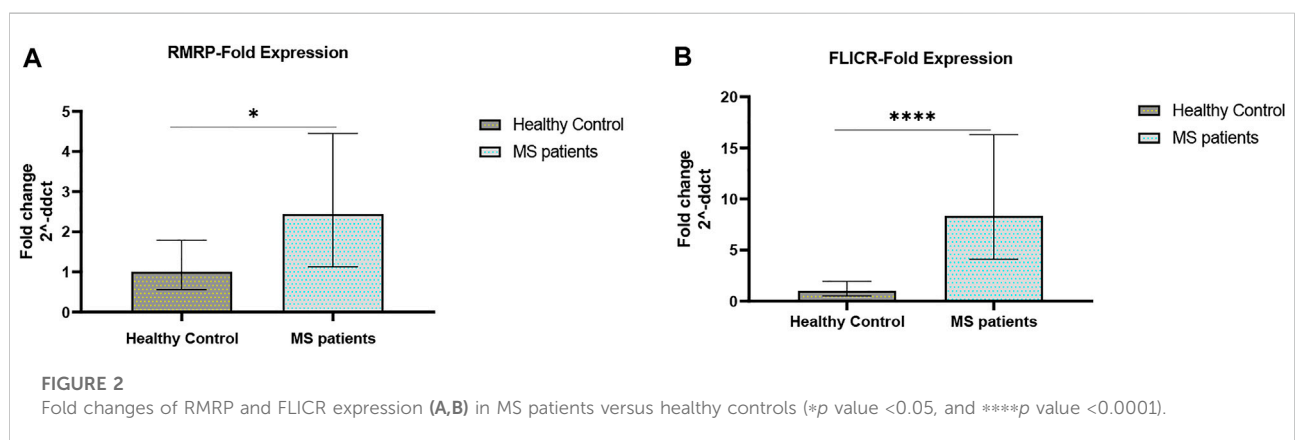


TABLE 5 Spearman's correlation between expression levels of lncRNAs among MS patients and healthy subjects (\*  $p$ -Value at a significance level of  $p < 0.05$ . \*\*  $p$ -Value at a significance level of  $p < 0.001$ ).

	RMRP		TH2-LCR		MAFTRR		FLICR	
	Patients	Controls	Patients	Controls	Patients	Controls	Patients	Controls
NEST	0.4*	0.25	0.37*	0.21	0.38*	0.04	0.49**	0.046
RMRP			0.69**	0.016	0.59**	0.15	0.49**	-0.24
TH2-LCR					0.51**	0.08	0.44*	0.23
MAFTRR							0.42*	-0.13

TABLE 6 The results of ROC curve analyses for two differentially expressed lncRNAs in patients with MS disease.

FLICR				RMRP			
AUC±SD	Sensitivity	Specificity	$p$ value	AUC±SD	Sensitivity	Specificity	$p$ value
0.84 ± 0.03	0.86	0.72	<0.0001	0.63 ± 0.05	0.5	0.88	0.02

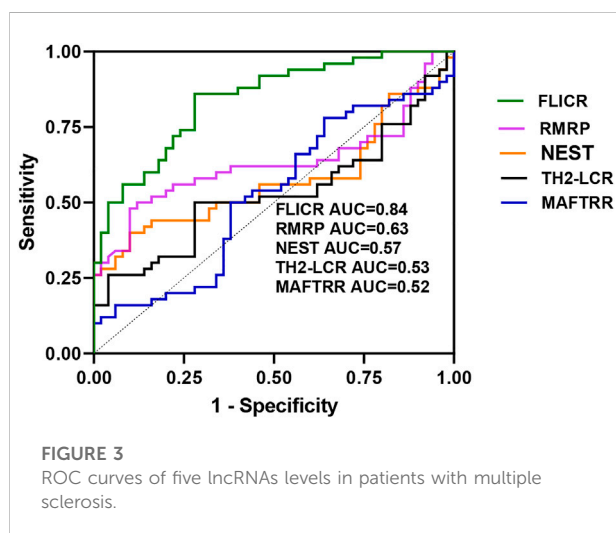


FIGURE 3 ROC curves of five lncRNAs levels in patients with multiple sclerosis.

value=0.84). RMRP, NEST, TH2-LCR and MAFTRR had AUC values of 0.63, 0.57, 0.53 and 0.52, respectively (Figure 3).

Sensitivity and specificity values for two differentially expressed genes between cases and controls, i.e., FLICR and RMRP are shown in Tables 5, 6.

Expression of NEST lncRNA was positively correlated with disease duration in MS patients, but negatively correlated with age at onset (Table 7).

## Discussion

Tregs have important functions in the pathoetiology of MS. Alterations in the frequency and suppressive effects of Tregs in

TABLE 7 The results of Spearman's rank correlation between expressions of five lncRNAs and clinical data.

	Age	Disease duration	Age at onset	EDSS
NEST	-0.207	0.289*	-0.32*	0.09
RMRP	-0.076	-0.03	-0.04	-0.03
TH2-LCR	-0.183	-0.121	-0.1	0.047
MAFTRR	-0.058	0.014	-0.08	-0.04
FLICR	-0.157	0.194	-0.26	0.094

\*Significance level of  $p < 0.05$ .

\*\*Significance level of  $p < 0.001$ .

Disease duration was classified into 3 ranges (1–5, 6–10 and more than 4 years).

EDSS, scores was classified into 2 ranges (1–2 and 3–5).

MS patients is implicated with the evolution and exacerbation of MS (Kimura, 2020). Therefore, genes that regulate function of Tregs are potentially involved in the pathoetiology of this disorder. We compared expression of five Treg-associated lncRNAs between MS patients and healthy persons. We noticed higher expression levels of RMRP and FLICR in MS patients compared with controls. Consistent with our findings, a recent investigation has reported significant up-regulation of RMRP in drug-naïve relapsing remitting MS patients compared to healthy persons (Rahmani et al., 2021). However, expression of this lncRNA has been lower in IFN $\beta$ -1 $\alpha$ -treated patients compared with drug-naïve patients (Rahmani et al., 2021). FLICR has a role as negative regulator of FOXP3 *in cis*. Notably, it is expressed in Tregs (Zemmour et al., 2017). Its role in the regulation of FOXP3 expression is exerted through cooperation with TGF $\beta$  and IL-2 signaling (Zemmour et al., 2017). Up-regulation of this lncRNA in MS patients might reflect abnormal activity of at least a subgroup of Tregs in these patients.

Besides, our data supported significant correlations between expression levels of NEST, RMRP, TH2-LCR, MAFTRR and FLICR lncRNAs among MS patients, but not controls. This finding indicates the presence of a disease-related regulatory or interactive mechanism among these lncRNAs. Therefore, interruption of this network might influence pathogenesis of MS.

Consistent with substantial up-regulation of FLICR in MS patients, ROC curve analysis revealed appropriate power of FLICR in differentiating between MS patients and healthy controls, suggesting this lncRNA as a possible peripheral marker of MS.

Finally, we detected positive correlation between expression of NEST lncRNA and disease duration in MS patients, but its expression was inversely correlated with age at onset of MS. NEST has been previously reported to participate in the epigenetic activation of the *IFNG* locus (Gomez et al., 2013). IFN- $\gamma$  is a key cytokine detected in MS lesions. Moreover, IFN- $\gamma$  levels are impressively up-regulated during MS activity. Besides, IFN- $\gamma$ -producing Th1 responses are associated with inflammation both in MS patients and animal models of this disorder (Zamvil and Steinman, 1990; Liblau et al., 1995).

Taken together, we reported up-regulation of two Treg-related lncRNAs in MS patients and suggested one of these lncRNAs as a putative marker for MS. We recommend conduction of additional studies for verification of these results.

## Data availability statement

The original contributions presented in the study are included in the article/supplementary materials, further inquiries can be directed to the corresponding authors.

## References

- ANZgene (2009). Genome-wide association study identifies new multiple sclerosis susceptibility loci on chromosomes 12 and 20. *Nat. Genet.* 41 (7), 824–828. doi:10.1038/ng.396
- Dalla Libera, D., Di Mitri, D., Bergami, A., Centonze, D., Gasperini, C., Grasso, M. G., et al. (2011). T regulatory cells are markers of disease activity in multiple sclerosis patients. *PLoS one* 6 (6), e21386. doi:10.1371/journal.pone.0021386
- Frisullo, G., Nociti, V., Iorio, R., Patanella, A. K., Caggiula, M., Marti, A., et al. (2009). Regulatory T cells fail to suppress CD4<sup>T+</sup>-bet<sup>+</sup> T cells in relapsing multiple sclerosis patients. *Immunology* 127 (3), 418–428. doi:10.1111/j.1365-2567.2008.02963.x
- Fritzsche, B., Haas, J., König, F., Kunz, P., Fritzsche, E., Pöschl, J., et al. (2011). Intracerebral human regulatory T cells: Analysis of CD4<sup>+</sup> CD25<sup>+</sup> FOXP3<sup>+</sup> T cells in brain lesions and cerebrospinal fluid of multiple sclerosis patients. *PLoS one* 6 (3), e17988. doi:10.1371/journal.pone.0017988
- Ghafouri-Fard, S., and Taheri, M. (2020). A comprehensive review of non-coding RNAs functions in multiple sclerosis. *Eur. J. Pharmacol.* 879, 173127. doi:10.1016/j.ejphar.2020.173127
- Gomez, J. A., Wapinski, O. L., Yang, Y. W., Bureau, J.-F., Gopinath, S., Monack, D. M., et al. (2013). The NeST long ncRNA controls microbial susceptibility and epigenetic activation of the interferon- $\gamma$  locus. *Cell*. 152 (4), 743–754. doi:10.1016/j.cell.2013.01.015

## Ethics statement

The studies involving human participants were reviewed and approved by The study protocol was approved by the ethical committee of Shahid Beheshti University of Medical Sciences (IR.SBMU.MSP.REC.1400.562). The patients/participants provided their written informed consent to participate in this study.

## Author contributions

SG-F wrote the manuscript and revised it. MT and AS designed and supervised the study. SE designed and supervised the study. BH, MD and FE collected the data and performed the experiment. SE analyzed the data. All authors read and approved the submitted manuscript.

## Conflict of interest

The authors declare that the research was conducted in the absence of any commercial or financial relationships that could be construed as a potential conflict of interest.

## Publisher's note

All claims expressed in this article are solely those of the authors and do not necessarily represent those of their affiliated organizations, or those of the publisher, the editors and the reviewers. Any product that may be evaluated in this article, or claim that may be made by its manufacturer, is not guaranteed or endorsed by the publisher.

- Haas, J., Hug, A., Viehöver, A., Fritzsche, B., Falk, C. S., Filser, A., et al. (2005). Reduced suppressive effect of CD4<sup>+</sup> CD25<sup>high</sup> regulatory T cells on the T cell immune response against myelin oligodendrocyte glycoprotein in patients with multiple sclerosis. *Eur. J. Immunol.* 35 (11), 3343–3352. doi:10.1002/eji.200526065
- Jalaiei, A., Asadi, M. R., Sabaie, H., Dehghani, H., Ghahsouran, J., Hussen, B. M., et al. (2021). Long non-coding RNAs, novel offenders or guardians in multiple sclerosis: A scoping review. *Front. Immunol.* 12, 774002. doi:10.3389/fimmu.2021.774002
- Kimura, K. (2020). Regulatory T cells in multiple sclerosis. *Clin. Exp. Neuroimmunol.* 11 (3), 148–155. doi:10.1111/cen3.12591
- Liblau, R. S., Singer, S. M., and McDevitt, H. O. (1995). Th1 and Th2 CD4<sup>+</sup> T cells in the pathogenesis of organ-specific autoimmune diseases. *Immunol. Today* 16 (1), 34–38. doi:10.1016/0167-5699(95)80068-9
- Luo, Y., and Wang, H. (2020). Effects of non-coding RNA on regulatory T cells and implications for treatment of immunological diseases. *Front. Immunol.* 11, 612060. doi:10.3389/fimmu.2020.612060
- Polman, C. H., Reingold, S. C., Banwell, B., Clanet, M., Cohen, J. A., Filippi, M., et al. (2011). Diagnostic criteria for multiple sclerosis: 2010 revisions to the McDonald criteria. *Ann. Neurol.* 69 (2), 292–302. doi:10.1002/ana.22366

- Rahmani, S., Noorolyai, S., Ayromlou, H., Khaze Shahgoli, V., Shanebandi, D., Baghbani, E., et al. (2021). The expression analyses of RMRP, DDX5, and RORC in RRMS patients treated with different drugs versus naïve patients and healthy controls. *Gene* 769, 145236. doi:10.1016/j.gene.2020.145236
- Rioux, J., Goyette, P., Vyse, T., Hammarström, L., Fernando, M., Green, T., et al. (2009). International MHC and Autoimmunity Genetics Network Mapping of multiple susceptibility variants within the MHC region for 7 immune-mediated diseases. *Proc. Natl. Acad. Sci. U. S. A.* 106, 18680–18685. doi:10.1073/pnas.0909307106
- Rodi, M., Dimisianos, N., De Lastic, A-L., Sakellarakis, P., Deraos, G., Matsoukas, J., et al. (2016). Regulatory cell populations in relapsing-remitting multiple sclerosis (RRMS) patients: Effect of disease activity and treatment regimens. *Int. J. Mol. Sci.* 17 (9), 1398. doi:10.3390/ijms17091398
- Seddiki, N., Santner-Nanan, B., Martinson, J., Zaunders, J., Sasson, S., Landay, A., et al. (2006). Expression of interleukin (IL)-2 and IL-7 receptors discriminates between human regulatory and activated T cells. *J. Exp. Med.* 203 (7), 1693–1700. doi:10.1084/jem.20060468
- Taheri, M., Barth, D. A., Kargl, J., Rezaei, O., Ghafouri-Fard, S., and Pichler, M. (2021). Emerging role of non-coding RNAs in regulation of T-lymphocyte function. *Front. Immunol.* 12, 756042. doi:10.3389/fimmu.2021.756042
- Venken, K., Hellings, N., Thewissen, M., Somers, V., Hensen, K., Rummens, J. L., et al. (2008). Compromised CD4+ CD25high regulatory T-cell function in patients with relapsing-remitting multiple sclerosis is correlated with a reduced frequency of FOXP3-positive cells and reduced FOXP3 expression at the single-cell level. *Immunology* 123 (1), 79–89. doi:10.1111/j.1365-2567.2007.02690.x
- Venken, K., Thewissen, M., Hellings, N., Somers, V., Hensen, K., Rummens, J-L., et al. (2007). A CFSE based assay for measuring CD4+ CD25+ regulatory T cell mediated suppression of auto-antigen specific and polyclonal T cell responses. *J. Immunol. Methods* 322 (1-2), 1–11. doi:10.1016/j.jim.2007.01.025
- Verma, N. D., Lam, A. D., Chiu, C., Tran, G. T., Hall, B. M., and Hodgkinson, S. J. (2021). Multiple sclerosis patients have reduced resting and increased activated CD4+ CD25+ FOXP3+ T regulatory cells. *Sci. Rep.* 11 (1), 10476. doi:10.1038/s41598-021-88448-5
- Viglietta, V., Baecher-Allan, C., Weiner, H. L., and Hafler, D. A. (2004). Loss of functional suppression by CD4+ CD25+ regulatory T cells in patients with multiple sclerosis. *J. Exp. Med.* 199 (7), 971–979. doi:10.1084/jem.20031579
- Zamvil, S. S., and Steinman, L. (1990). The T lymphocyte in experimental allergic encephalomyelitis. *Annu. Rev. Immunol.* 8 (1), 579–621. doi:10.1146/annurev.iy.08.040190.003051
- Zemmour, D., Pratama, A., Loughhead, S. M., Mathis, D., and Benoist, C. (2017). Flicr, a long noncoding RNA, modulates Foxp3 expression and autoimmunity. *Proc. Natl. Acad. Sci. U. S. A.* 114 (17), E3472–E3480. doi:10.1073/pnas.1700946114