

---

*Iyer, Kartik P.; Schumacher, Jörg; Sreenivasan, Katepalli R.; Yeung, P. K.:*

***Scaling of locally averaged energy dissipation and enstrophy density in isotropic turbulence***

---

*Original published in:*

New journal of physics / Institute of Physics. - [Bad Honnef] : Dt. Physikalische Ges.. - 21 (2019), art. 33016, 6 pp.

*Original published:* March 19, 2019

*ISSN:* 1367-2630

*DOI:* [10.1088/1367-2630/ab05e8](https://doi.org/10.1088/1367-2630/ab05e8)

*[ Visited:* April 11, 2019]



This work is licensed under a [Creative Commons Attribution 3.0 Unported license](https://creativecommons.org/licenses/by/3.0/).

To view a copy of this license, visit

[http://creativecommons.org/licenses/by/3.0](http://creativecommons.org/licenses/by/3.0/)



## PAPER

## Scaling of locally averaged energy dissipation and enstrophy density in isotropic turbulence

Kartik P Iyer<sup>1</sup>, Jörg Schumacher<sup>1,2</sup>, Katepalli R Sreenivasan<sup>3</sup> and P K Yeung<sup>4</sup><sup>1</sup> Department of Mechanical and Aerospace Engineering, New York University, New York, NY 11201, United States of America<sup>2</sup> Institut für Thermo- und Fluidodynamik, Technische Universität Ilmenau, Postfach 100565, D-98684 Ilmenau, Germany<sup>3</sup> Institute for Advanced Study, Princeton, NJ 08540, United States of America<sup>4</sup> Schools of Aerospace Engineering and Mechanical Engineering, Georgia Institute of Technology, Atlanta, GA 30332, United States of AmericaE-mail: [kartik.iyer@nyu.edu](mailto:kartik.iyer@nyu.edu)**Keywords:** scaling, energy dissipation, enstrophy, pressure Laplacian, local averages

## RECEIVED

2 October 2018

## REVISED

4 January 2019

## ACCEPTED FOR PUBLICATION

11 February 2019

## PUBLISHED

19 March 2019

Original content from this work may be used under the terms of the [Creative Commons Attribution 3.0 licence](https://creativecommons.org/licenses/by/4.0/).

Any further distribution of this work must maintain attribution to the author(s) and the title of the work, journal citation and DOI.



### Abstract

Using direct numerical simulations of isotropic turbulence in periodic cubes of several grid sizes, the largest being  $8192^3$  yielding a microscale Reynolds number of 1300, we study the properties of pressure Laplacian to understand differences in the inertial range scaling of enstrophy density and energy dissipation. Even though the pressure Laplacian is the difference between two highly intermittent quantities, it is non-intermittent and essentially follows Kolmogorov scaling, at least for low-order moments. Using this property, we show that the scaling exponents of local averages of dissipation and enstrophy remain unequal at all finite Reynolds numbers, though there appears to be a *very weak* tendency for the difference to decrease with increasing Reynolds number.

As in other highly correlated systems [1, 2], ‘local’ averaging over scales smaller than the system size is often employed [3, 4] in turbulence to study its statistical structure. Local averages of highly intermittent quantities are dependent on the averaging scale itself [5–7] and paradigms such as the central limit theorem do not apply. Properties of local averages of energy dissipation [8] (characterizing straining motions) and enstrophy [9] (characterizing local rotation) are the subject of much debate. The consensus of experimental and numerical work is that the local averages of these two quantities are different [10–16] while theories (with some numerical support), rooted in the paradigm of small-scale universality [17–22], conclude oppositely.

Here, we reconcile this difference by establishing two specific results. First, we show that the pressure Laplacian, which engenders the topological asymmetry between dissipation and enstrophy [13, 23–25], assumes a nearly self-similar (i.e. non-intermittent) form in the inertial range (IR); even though the pressure Laplacian is the difference between two highly intermittent quantities, it is essentially non-intermittent (i.e. scale-invariant) and roughly follows Kolmogorov scaling. Second, while the pressure [26–28] does constrain the scaling of local averages of dissipation and enstrophy, the self-similar property of the pressure Laplacian implies that the exponents remain unequal at all finite Reynolds numbers, though this constraint appears to weaken very slowly with increasing Reynolds number.

### Direct numerical simulations (DNS)

We use a DNS database of isotropic turbulence obtained by solving the incompressible, three-dimensional Navier–Stokes equations for the components of the turbulent velocity field  $u_i(\mathbf{x}, t)$  with  $i = x, y, z$  in a periodic cube with edge length  $L_0 = 2\pi$ , spanning a wide range of Reynolds numbers [29]. Taylor microscale Reynolds numbers up to 1300 were used. The largest DNS was conducted on a grid size of  $8192^3$  [22]. A statistically steady state was obtained by forcing the low Fourier modes [29]. Averages over ten large-eddy turnover times were used for the analysis;  $\langle \cdot \rangle$  denotes space/time averages.

**Definitions.** It is well known in homogeneous turbulence that  $\epsilon = \Omega + 2\nu(\partial u_i/\partial x_j \partial u_j/\partial x_i)$ , where  $\epsilon \equiv \frac{\nu}{2}(\partial u_i/\partial x_j + \partial u_j/\partial x_i)^2$  is the turbulent energy dissipation rate per unit mass,  $\nu$  is the kinematic viscosity of the fluid and the summation convention is implied; the enstrophy density is given by  $\Omega \equiv \nu|\boldsymbol{\omega}|^2$ , where  $\boldsymbol{\omega} = \nabla \times \mathbf{u}$  is the vorticity.

Define the local average of dissipation and enstrophy at scale  $r$  as

$$\epsilon_r(\mathbf{x}, t) = \frac{1}{V_r} \int_{V_r} \epsilon(\mathbf{x} + \mathbf{x}', t) d\mathbf{x}', \quad \Omega_r(\mathbf{x}, t) = \frac{1}{V_r} \int_{V_r} \Omega(\mathbf{x} + \mathbf{x}', t) d\mathbf{x}', \quad (1)$$

where  $V_r = r^3$  is a volume centered around  $\mathbf{x}$ . Taking the divergence of the Navier–Stokes equations at constant mass density  $\rho_0$ , we obtain the Poisson equation for the pressure field  $p$ , which can then be related via its Laplacian to  $\epsilon$  and  $\Omega$  as  $\Omega = \epsilon + 2\nu\Delta p/\rho_0$ . Averaging this relation over volume of scale  $r \geq 0$ , we get

$$\Omega_r(\mathbf{x}, t) = \epsilon_r(\mathbf{x}, t) + \Delta p_r(\mathbf{x}, t), \quad (2)$$

where  $\Delta p_r$  is the locally averaged field of the pressure Laplacian  $\Delta p$  over scale  $r$  and is given by the surface integral, in accordance with Gauss's theorem, as

$$\Delta p_r(\mathbf{x}, t) \equiv \frac{2\nu}{\rho_0} \frac{1}{V_r} \int_{s_r} \frac{\partial}{\partial x_j} u_i(\mathbf{x} + \mathbf{x}', t) u_j(\mathbf{x} + \mathbf{x}', t) ds_i. \quad (3)$$

Here,  $s_r$  denotes the surface around volume  $V_r$ . For brevity, in what follows, we drop the dependence on  $(\mathbf{x}, t)$ : for instance,  $\epsilon_r \equiv \epsilon_r(\mathbf{x}, t)$ . We note that in homogeneous turbulence, for any  $r \geq 0$ ,  $\langle \Delta p_r \rangle = 0$  or equivalently,  $\langle \epsilon_r \rangle = \langle \Omega_r \rangle$ . But higher moments of  $\epsilon_r$  and  $\Omega_r$  can differ.

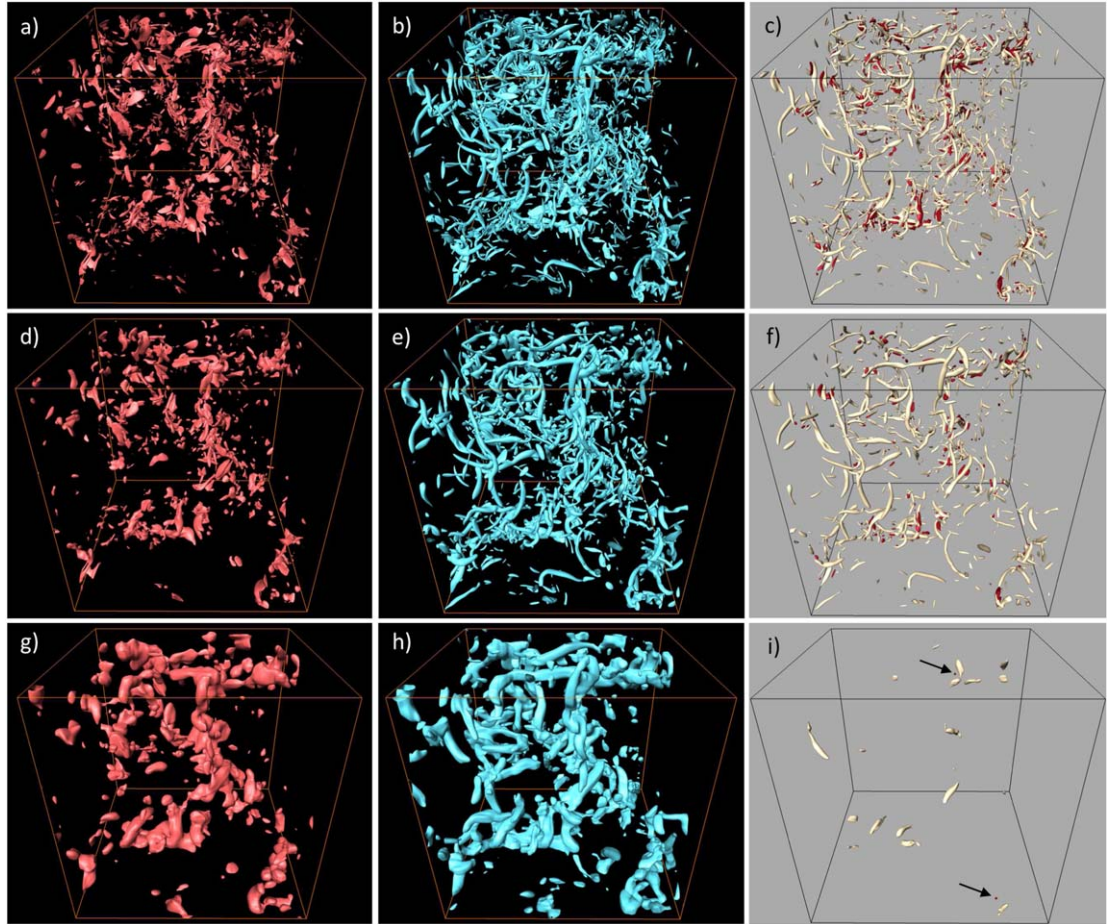
## Results

To build up some intuition, we show in figure 1 all three fields in a small sub-volume of the computational box. The top row shows quantities without any averaging while the two bottom rows are locally averaged quantities for two averaging scales  $r$  and two different thresholds. The top row displays the typical structure: while the dissipation layers appear more sheet-like, the local enstrophy arranges itself in a tube-like fashion [9, 22]. This is a fingerprint of the local vortex-stretching, a central building block of three-dimensional turbulence. High-amplitude shear layers (leading to dissipation) are the result of self-induced strain [30, 31]. With increasing  $r$ , the differences between  $\epsilon_r$  and  $\Omega_r$  become less consequential, as the panels (f) and (i) show. Figures 1(c), (f) and (i) show that the isosurfaces of positive amplitude of local pressure Laplacian appear to have a spatial correlation with local enstrophy. Pressure minima or pressure Laplacian maxima are found in the low dissipation vortex cores beyond which  $\Delta p_r$  and  $\epsilon_r$  tend to be positively correlated, since the isosurfaces of positive amplitude of local pressure Laplacian have a greater correspondence with local dissipation at larger scales (compare panels (f), (i) with (d), (g), respectively), in relation to that at the smallest scales (compare panel (c) with (a)). The pressure Laplacian isosurfaces of negative amplitude (but same magnitude) are much more sparsely distributed, indicating a positively skewed field.

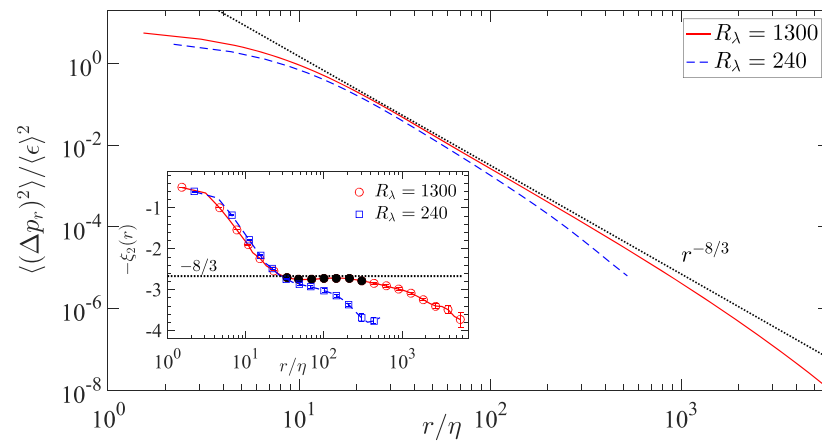
By examining the variance, skewness and flatness of the pressure Laplacian  $\Delta p_r$ , we now show that it has attributes of nearly self-similar Kolmogorov-like scaling at high Reynolds numbers. First, figure 2 shows that the variance of  $\Delta p_r$  in IR ( $\eta \ll r \ll L$ ) follows the power-law,  $\langle (\Delta p_r)^2 \rangle \sim r^{-\xi_2}$  where  $\xi_2$  is the second-order scaling exponent. Kolmogorov's arguments [32], which do not account for intermittency, imply that  $\xi_2 = 8/3$ ; the measured second-order exponent is quite close (see the inset which presents local slopes), with the higher Reynolds number data showing better conformity. The trend towards intermittency-free scaling of  $\langle (\Delta p_r)^2 \rangle$  reported here is consistent with that of the  $\Delta p$  spectrum, reported in [33, 34].

Now, the condition for self-similarity is that the exponent,  $\sigma_q := \xi_q/q$ , where  $\xi_q$  is the scaling exponent of  $\Delta p_r$  at order  $q$ , should be a constant over a range of scales; for Kolmogorov scaling, this ratio must be  $4/3$ . In figure 3, we plot the local slopes for the second, third and fourth moments in this self-similar format for the highest Reynolds number considered. Although the behavior at fourth order is less convincing than that of the second, there exists the tendency to the constant value of  $4/3$  (within the error bars of  $\sigma_q$ ), leading to the conclusion that  $\Delta p_r$  is likely to be a self-similar quantity following the Kolmogorov scaling at least at low orders. Note, however, that the fourth moment of  $\Delta p_r$  is equivalent to the twelfth moment for velocity differences [4]; this renders fourth-order statistics more sensitive to finite sampling effects, compared to lower orders.

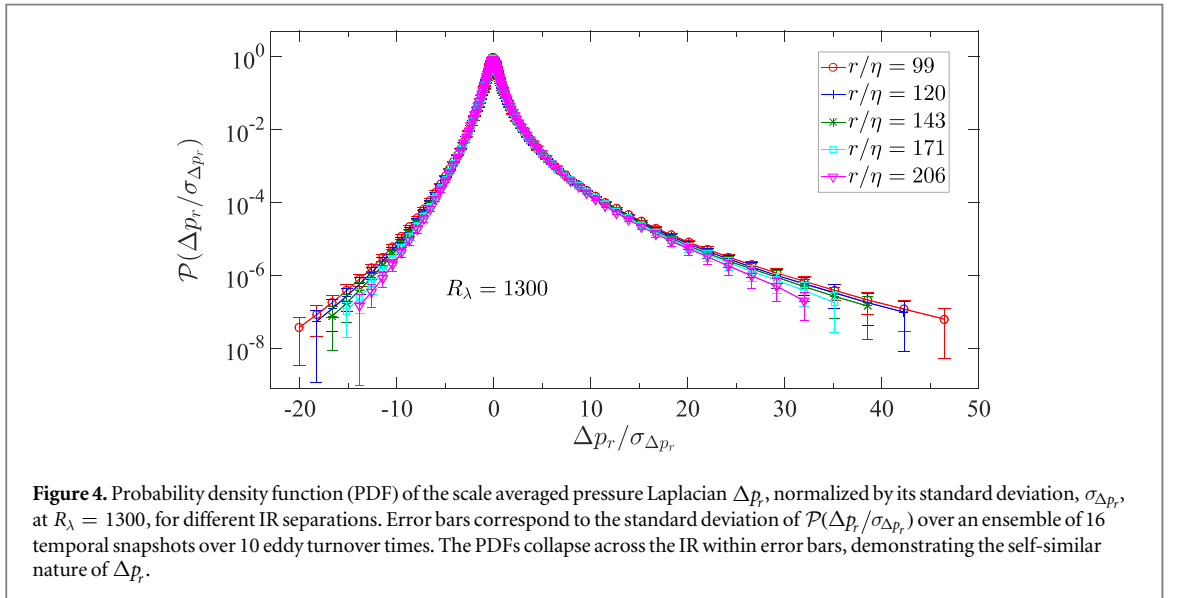
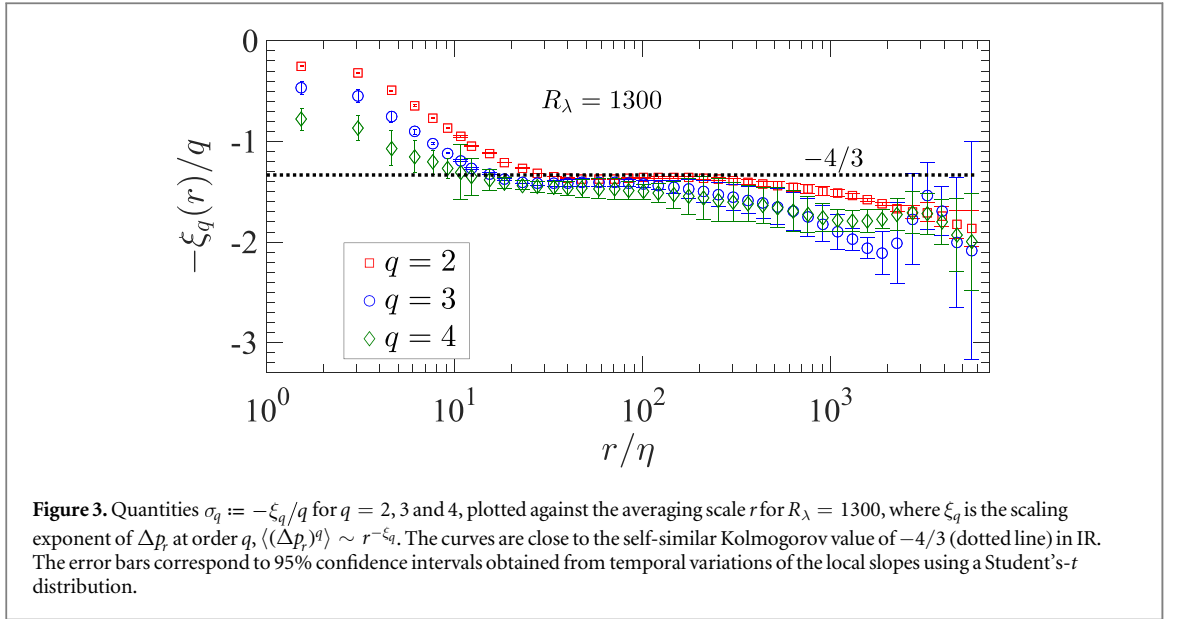
Analogously, the probability density functions (PDFs) of  $\Delta p_r$ , normalized by the respective standard deviation,  $\sigma_{\Delta p_r} = \langle (\Delta p_r)^2 \rangle^{1/2}$ , collapse for different averaging scales  $r$  in the IR, as seen in figure 4, confirming that  $\Delta p_r$  is indeed self-similar. The PDF tails collapse within error bars, but less perfectly than the bulk, possibly due to finite sampling and finite Reynolds number effects. Furthermore, the PDFs are distinctly non-Gaussian and positively skewed. The skewness increases with Reynolds number, suggesting that high enstrophy and low



**Figure 1.** Isosurface plots of the kinetic energy dissipation rate (a), (d), (g), the local enstrophy (b), (e), (h), and the pressure Laplacian (c), (f), (i). Data are obtained from the DNS at the highest Reynolds number in a cubic sub-volume with a side length  $L_0/16$ . Panels (a)–(c) show the data without spatial averaging at an isosurface level of 1.5 in characteristic units of the DNS. Panels (d)–(f) display the fields for  $r = 10\eta$  at a level of 1.0;  $\eta = (\nu^3/\langle\epsilon\rangle)^{1/4}$  is the Kolmogorov length scale of the flow. Panels (g)–(i) display the field at  $r = 33\eta$  at a level of 0.5. Positive isosurfaces for the pressure Laplacian are shown in yellow and negative ones in red, in panels (c), (f) and (i). In panel (i) negative contours are indicated by black arrows.

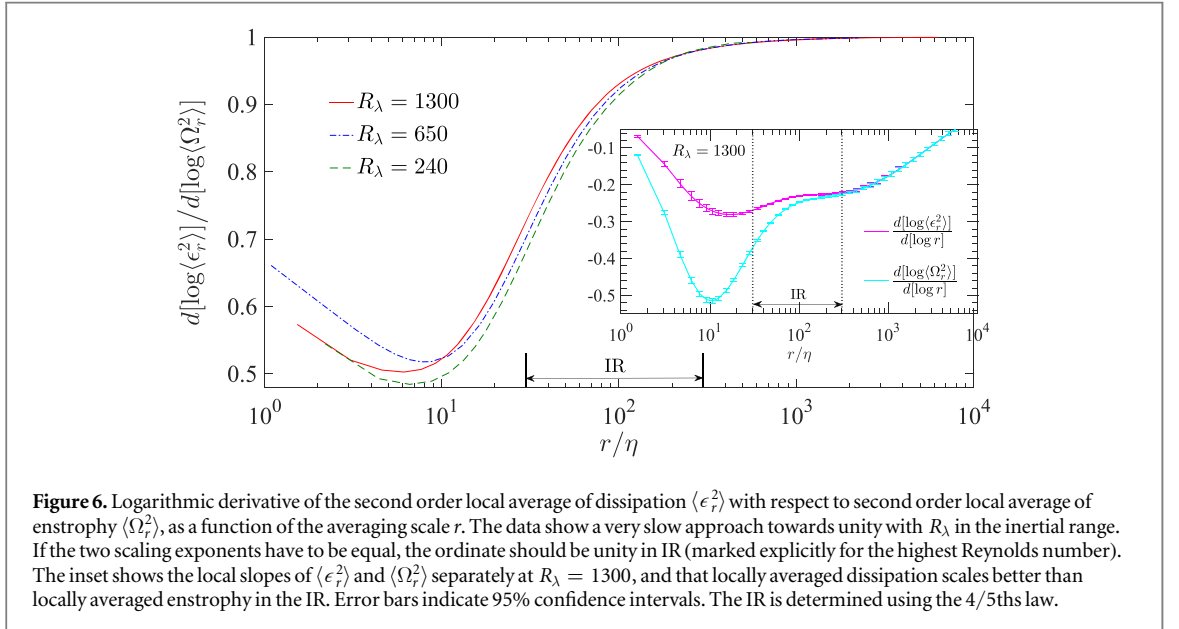
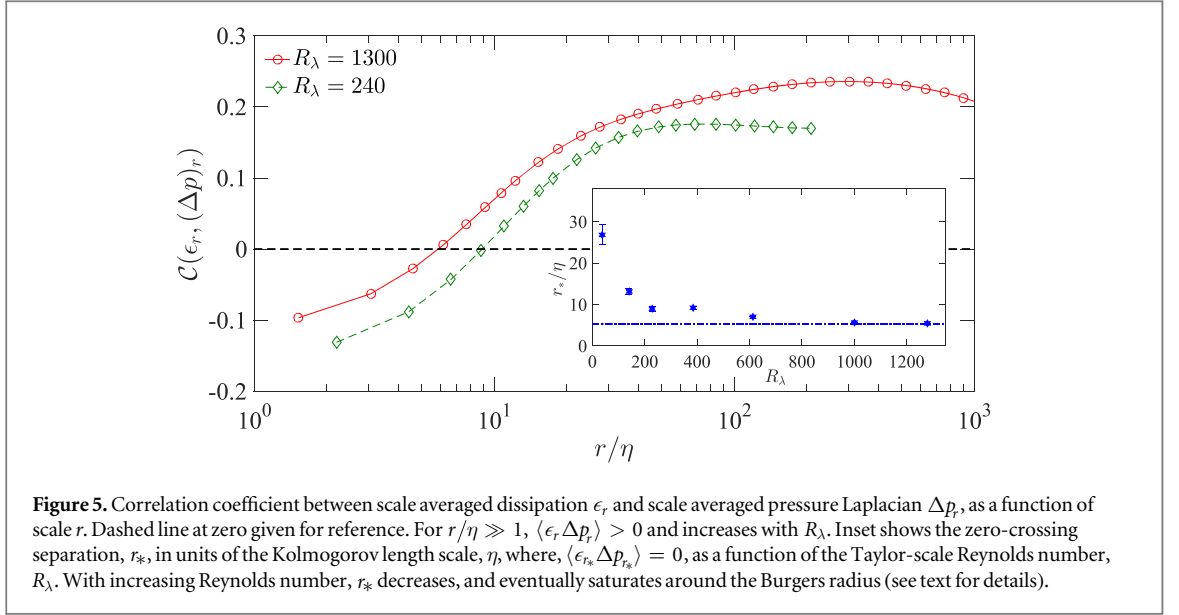


**Figure 2.** Variance of the locally averaged pressure Laplacian as a function of the averaging scale  $r$ . Dotted line corresponds to the Kolmogorov mean-field [32] scaling of  $r^{-8/3}$ . Inset shows the exponent,  $\xi_2(r) = d[\log\langle(\Delta p_r)^2\rangle]/d[\log r]$  versus  $r/\eta$ . The dotted line corresponds to the self-similar exponent,  $\xi_2 = 8/3$ . In the IR,  $r/\eta \in (25\ 350)$  for  $R_\lambda = 1300$  (filled circles), the least-square fit exponent,  $\xi_2 = 2.73 \pm 0.02$ .



dissipation events ( $\Delta p_r > 0$ ), are increasingly more probable than the converse ( $\Delta p_r < 0$ ), over inertial length scales.

If the skewness of  $\Delta p_r$  is positive, as can be seen visually in figure 1 and more quantitatively in figure 4, it follows that spatial averages of pressure Laplacian and dissipation will be positively correlated. In fact, all  $\langle \epsilon_r^m (\Delta p_r)^n \rangle > 0$  for  $m \geq 1$  and  $n \geq 1$  in the IR. Figure 5 shows, for the  $m = n = 1$  case, the correlation coefficient,  $\mathcal{C}(\epsilon_r, \Delta p_r) \equiv \langle \epsilon_r \Delta p_r \rangle / \sigma_{\epsilon_r} \sigma_{\Delta p_r}$ . As  $r/\eta \rightarrow 0$ ,  $\langle \epsilon_r \Delta p_r \rangle < 0$ , consistent with the picture that turbulence is composed of low pressure (or high pressure Laplacian), high enstrophy vortex structures, wrapped by high dissipation sheets [22, 25, 35, 36]. When the averaging scale  $r$  increases, the average product  $\langle \epsilon_r \Delta p_r \rangle$  eventually becomes positive since  $\Delta p_r$  is non-intermittent and remains positively skewed. Interestingly, the zero-crossings of the two curves in figure 5 occur at about  $6\eta$  and  $8\eta$  for  $R_\lambda = 1300$  and  $240$ , respectively; this is of the order of the characteristic scale that can be associated with the elementary Burgers vortex stretching mechanism, the Burgers radius,  $r_B \approx 4\eta$  [37]. We find that the zero moves to smaller values as the Reynolds number increases and saturates at about  $5\eta$  (see figure 5 inset), which implies that the high-dissipation shear layer is wrapped as close as possible around the core of the stretched vortex filament at higher Reynolds numbers,  $R_\lambda \gtrsim 1000$ .



To see how the positivity of  $\langle \epsilon_r^m (\Delta p_r)^n \rangle$  in the IR affects the exponents of scale-averaged dissipation and enstrophy, we average the  $q$ th power of both sides of equation (2) and get

$$\langle \Omega_r^q \rangle - \langle \epsilon_r^q \rangle = \langle (\Delta p_r)^q \rangle + \sum_{m=1}^{q-1} \frac{q!}{m!(q-m)!} \langle (\Delta p_r)^m \epsilon_r^{q-m} \rangle. \quad (4)$$

In IR, since  $\langle (\Delta p_r)^q \rangle \geq 0$  and  $\langle (\Delta p_r)^m \epsilon_r^n \rangle \geq 0$  for  $m+n=q$ , as empirically shown above, we conclude that  $\langle \Omega_r^q \rangle \geq \langle \epsilon_r^q \rangle$ . Now assume that  $\epsilon_r$  and  $\Omega_r$  follow a power law scaling in IR [38],  $\langle \epsilon_r^q \rangle \sim (r/L)^{-\mu(q)}$  and  $\langle \Omega_r^q \rangle \sim (r/L)^{-\tau(q)}$ ,  $r \ll L$ , where  $\mu(q)$  and  $\tau(q)$  are independent of  $R_\lambda$  for all  $r$  in the IR and  $L$  is the flow macro-scale. It follows that

$$\tau(q) \geq \mu(q). \quad (5)$$

Figure 6 verifies this expectation for order  $q=2$ , by showing the relative logarithmic derivative of  $\langle \epsilon_r^2 \rangle$  with that of  $\langle \Omega_r^2 \rangle$ , at different  $R_\lambda$ . In the IR, the ratio  $\mu(2)/\tau(2) < 1$  for the Reynolds numbers examined, in agreement with equation (5). There appears to be a very slow trend towards unity, but the slowness of the approach allows us to conclude that the inequality holds for all practical Reynolds numbers.

## Conclusions

We have shown that the pressure Laplacian  $\Delta p_r$ , which is the difference of spatial averages of two highly intermittent quantities, namely the enstrophy which quantifies rotational motions and dissipation which characterizes the strain dominated motions, is a non-intermittent (i.e. scale-invariant) quantity at high Reynolds numbers. This suggests that rotational and straining motions can be connected statistically in a relatively simple manner which is not order-dependent. Furthermore, we have established that the statistical asymmetry of  $\Delta p_r$ , results in the uni-directional ordering of the scaling exponents of the moments  $\langle \epsilon_r^q \rangle$  and  $\langle \Omega_r^q \rangle$  as  $\tau(q) \geq \mu(q)$ . Since the longitudinal and transverse velocity increments can be thought of as being related to dissipation and enstrophy, respectively [15], it is conceivable that an analogous situation holds for velocity increments. This is an enticing prospect, since phenomenological models that are usually created for longitudinal increments, for instance [39, 40], can then be generalized to the velocity increment tensor in an uncomplicated manner.

## Acknowledgments

We thank Theodore Drivas and Victor Yakhot for useful discussions. This work is partially supported by the National Science Foundation (NSF), via Grant No. ACI-1640771 at the Georgia Institute of Technology. The computations were performed using supercomputing resources provided through the XSEDE consortium (which is funded by NSF) at the Texas Advanced Computing Center at the University of Texas (Austin), and the Blue Waters Project at the National Center for Supercomputing Applications at the University of Illinois (Urbana-Champaign).

## References

- [1] Harte J, Kinzig A and Green J 1999 *Science* **284** 334–6
- [2] Christensen K, Danon L, Scanlon T and Bak P 2002 *Proc. Nat. Acad. Sci.* **99** 2509–13
- [3] Oboukhov A M 1962 *J. Fluid Mech.* **13** 77–81
- [4] Kolmogorov A N 1962 *J. Fluid Mech.* **13** 82–5
- [5] Stolovitzky G, Kailasnath P and Sreenivasan K R 1992 *Phys. Rev. Lett.* **69** 1178–81
- [6] Joubaud S, Petrosyan A, Ciliberto S and Garnier N B 2008 *Phys. Rev. Lett.* **100** 180601
- [7] Bramwell S T 2009 *Nat. Phys.* **5** 443–7
- [8] Sreenivasan K R and Antonia RA 1997 *Annu. Rev. Fluid Mech.* **29** 435–72
- [9] Schumacher J, Eckhardt B and Doering C R 2010 *Phys. Lett. A* **374** 861–5
- [10] Siggia E D 1981 *J. Fluid Mech.* **107** 375–406
- [11] Kerr R M 1985 *J. Fluid Mech.* **153** 31–58
- [12] Meneveau C, Sreenivasan K R, Kailasnath P and Fan M S 1990 *Phys. Rev. A* **41** 894–913
- [13] Brachet M 1991 *Fluid. Dyn. Res.* **8** 1–8
- [14] Chen S, Sreenivasan K R and Nelkin M 1997 *Phys. Rev. Lett.* **79** 1253–6
- [15] Chen S, Sreenivasan K R, Nelkin M and Cao N 1997 *Phys. Rev. Lett.* **79** 2253–6
- [16] Yeung P K, Sreenivasan K R and Pope S B 2018 *Phys. Rev. Fluids* **3** 064603
- [17] Nelkin M and Bell T L 1978 *Phys. Rev. A* **17** 363–9
- [18] He G, Chen S, Kraichnan R H, Zhang R and Zhou Y 1998 *Phys. Rev. Lett.* **81** 4636–9
- [19] Nelkin M 1999 *Phys. Fluids* **11** 2202–4
- [20] Donzis D A, Yeung P K and Sreenivasan K R 2008 *Phys. Fluids* **20** 045108
- [21] Yeung P K, Donzis D A and Sreenivasan K R 2012 *J. Fluid Mech.* **700** 5–15
- [22] Yeung P K, Zhai X M and Sreenivasan K R 2015 *Proc. Nat. Acad. Sci.* **112** 12633–8
- [23] Siggia E 1981 *J. Fluid Mech.* **107** 375–406
- [24] She Z S, Jackson E and Orszag S A 1990 *Nature* **344** 226–8
- [25] Vincent A and Meneguzzi M 1991 *J. Fluid Mech.* **225** 1–20
- [26] Holzer M and Siggia E 1993 *Phys. Fluids* **5** 2525–32
- [27] Pumir A 1994 *Phys. Fluids* **6** 2071–83
- [28] Yakhot V 2003 *J. Fluid Mech.* **495** 135–43
- [29] Donzis D A and Yeung P K 2010 *Physica D* **239** 1278–87
- [30] Hamlington P E, Schumacher J and Dahm W J A 2008 *Phys. Rev. E* **77** 026303
- [31] Hamlington P E, Schumacher J and Dahm W J A 2008 *Phys. Fluids* **20** 111703
- [32] Kolmogorov A N 1941 *Dokl. Akad. Nauk. SSSR* **434** 16–8
- [33] Gotoh T and Fukayama D 2001 *Phys. Rev. Lett.* **86** 3775–8
- [34] Ishihara T, Kaneda Y, Yokokawa M, Itakura K and Uno A 2003 *J. Phys. Soc. Jpn.* **72** 983–6
- [35] She Z S, Jackson E and Orszag S A 1990 *Nature* **344** 226–8
- [36] Douady S, Couder Y and Brachet M E 1991 *Phys. Rev. Lett.* **67** 983–6
- [37] Kambe T and Hatakeyama N 2000 *Fluid. Dyn. Res.* **27** 247–67
- [38] Frisch U 1995 *Turbulence* (Cambridge: Cambridge University Press) (<https://doi.org/10.1017/CBO9781139170666>)
- [39] Meneveau C and Sreenivasan K R 1987 *Phys. Rev. Lett.* **59** 1424–7
- [40] She Z S and Leveque E 1994 *Phys. Rev. Lett.* **72** 336–9