

53. IWK

Internationales Wissenschaftliches Kolloquium
International Scientific Colloquium



Faculty of
Mechanical Engineering



PROSPECTS IN MECHANICAL ENGINEERING

8 - 12 September 2008

www.tu-ilmenau.de

th
TECHNISCHE UNIVERSITÄT
ILMENAU

Home / Index:

<http://www.db-thueringen.de/servlets/DocumentServlet?id=17534>

Published by Impressum

Publisher
Herausgeber Der Rektor der Technischen Universität Ilmenau
Univ.-Prof. Dr. rer. nat. habil. Dr. h. c. Prof. h. c. Peter Scharff

Editor
Redaktion Referat Marketing und Studentische Angelegenheiten
Andrea Schneider

Fakultät für Maschinenbau
Univ.-Prof. Dr.-Ing. habil. Peter Kurz,
Univ.-Prof. Dr.-Ing. habil. Rainer Grünwald,
Univ.-Prof. Dr.-Ing. habil. Prof. h. c. Dr. h. c. mult. Gerd Jäger,
Dr.-Ing Beate Schlütter,
Dipl.-Ing. Silke Stauche

Editorial Deadline
Redaktionsschluss 17. August 2008

Publishing House
Verlag Verlag ISLE, Betriebsstätte des ISLE e.V.
Werner-von-Siemens-Str. 16, 98693 Ilmenau

CD-ROM-Version:

Implementation
Realisierung Technische Universität Ilmenau
Christian Weigel, Helge Drumm

Production
Herstellung CDA Datenträger Albrechts GmbH, 98529 Suhl/Albrechts

ISBN: 978-3-938843-40-6 (CD-ROM-Version)

Online-Version:

Implementation
Realisierung Universitätsbibliothek Ilmenau
[ilmedia](#)
Postfach 10 05 65
98684 Ilmenau

© Technische Universität Ilmenau (Thür.) 2008

The content of the CD-ROM and online-documents are copyright protected by law.
Der Inhalt der CD-ROM und die Online-Dokumente sind urheberrechtlich geschützt.

Home / Index:

<http://www.db-thueringen.de/servlets/DocumentServlet?id=17534>

E. Andrada / H. Witte

How many neuronal activity does need the body stem during normal locomotion?

Intelligent Mechanics in Robotics

Since Weber & Weber (1836) biomechanical observations and models were mostly restricted to the extremities' behavior. But our quadrupedal phylogenetical ancestors produce up to 50% of their locomotion by movements of the trunk [1]. These movements are coordinated with those of the extremities to optimize the behavior and adaptability of the whole system [2]. In humans, the ubiquitous characteristic of the body stem morphology was inherited from our phylogenetic ancestors and adapted to the exigencies of bipedal walking by changing the principal body axis (pronograde to orthograde) by 90°. In addition, the human lower limbs still retain an ancestral three-segment construction, with proportions adapted to the needs of self-stabilization [3]. Under this point of view, it is plausible that bipedal walking has to involve also interaction and task sharing between the rhythmic oscillations in the body stem and the cyclic motion of the lower limbs. The locomotion process starts in the head, and will be generated in the trunk. Under this constellation, the head is used as an inertial guidance platform to provide a stable reference frame. Thus, to achieve stable locomotion (and to have a global reference parameter), head and trunk have to be stabilized with respect to the environment. Three main mechanisms have been identified to play an important role in postural stability during walking: 1) the coordination between head and trunk segments (phase shift angle between body stem segments), 2) the existence of a gradual damping mechanism (dm) from lumbar level to head, and 3) compensatory movements (cm) of the head and the trunk during straight walking. The questions arising at the moment are: how are these mechanisms coupled? Are the changes in the amplitudes and phase of the body stem with the speed only related to a very sophisticated neuronal control? A recently published study [4] showed that the variations of the 6 DOF kinematical parameters of trunk motion during walking are not simply correlated with anthropometry. The missing link between all those observations may be the individual dynamics of the trunk, determined by elastic and damping properties

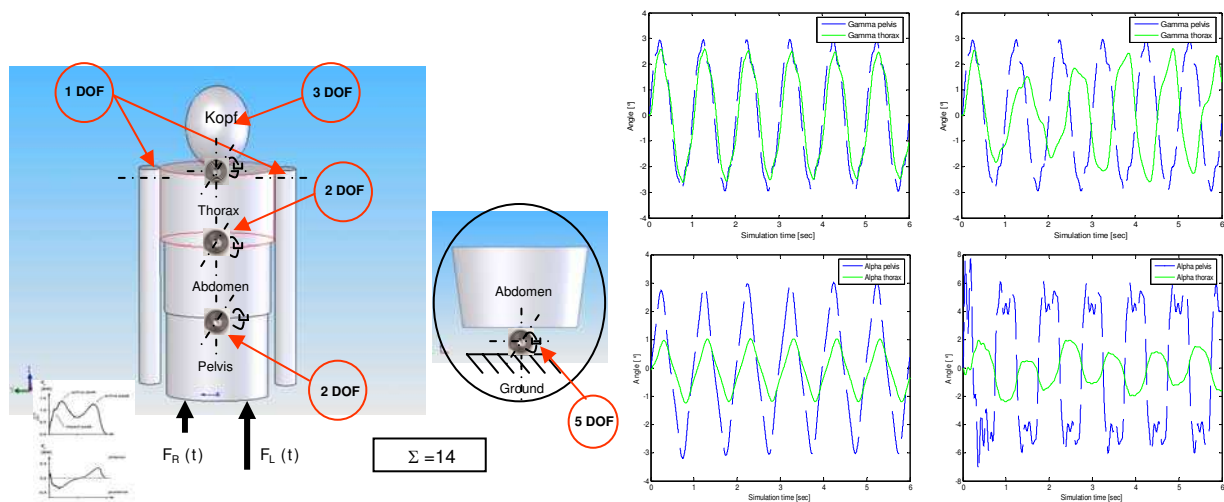


Figure 1: Left: Anthropo-functional model of the body stem based on Hanavan's model (14 DOF). Right: Change from in-phase to out-of-phase in the relative motions between pelvis and thorax. Upper: transversal plane, bottom: frontal plane. Changes were produced only by changing visco-elastic parameters in the joints and keeping ground reaction forces constant

of muscles and soft-tissues. We propose a 14 DOF morpho-functional model of the trunk based on Hanavan's model [5] (fig. 1-left) to make accessible that information via experiments. The results of the simulations show that the visco-elastic parameters (spring stiffness and damper constants), which are obtained by the simulations, control individual variations in amplitudes and phases of the different body segments in normal walking. These changes can be made keeping the ground reaction forces constant (fig. 1-right). Spring stiffness is the main cause in changing absolute amplitudes, while damping parameters produce the variation of the phases between segmental body stem parts. Finally, our simulations display the so called 'cm' without acting in any way the thorax or the head. This fact together with our kinematical results [4] convinced us that they are a result of the motion's dynamics (intelligent mechanics) and not due to a neuronal control, which was the accepted hypothesis up to now.

References:

- [1] Fischer M.S. & Lehmann R. (1998): Application of cineradiography for metric and kinematic study of in-phase gaits during locomotion of pika (*Ochotona rufescens*, Mammalia, Lagomorpha). *Zoology* **101**: 148-173.
- [2] Hackert R., Witte, H. & Fischer, M. S. (2000): Interaction between motions of the trunk and the limbs and the angle of attack during synchronous gaits of the pika (*Ochotona rufescens*). *Proc. AMAM (Adaptive Motion in Animals and Machines)*, Montreal.
- [3] Seyfarth, A., Günther, M. & Blickhan, R. (2001): Stable operation of an elastic three-segment leg. *Biol. Cybern.* **84**: 365-382.
- [4] Andrada E. (2008): A new model of the human trunk mechanics in walking. *Berichte aus der Biomechatronik*, Band 1. Universitätsverlag Ilmenau. ISBN 978-3-939473-25-1.
- [5] Hanavan E.P. (1964): A mathematical model of the human body. Technical Report AMRL-TR-64-102 (AD 608 463).

Authors:

Dr. Emanuel Andrada, Univ.-Prof. Dr. Hartmut Witte
 Technische Universität Ilmenau, Fakultät für Maschinenbau, Fachgebiet Biomechatronik
 P.O. Box 100565, D-98684 Ilmenau
 Phone: +49-3677-69-2460
 Fax: +49-3677-69-1280
 E-mail: Emanuel.Andrada@tu-ilmenau.de